

PVC WALL & CEILING PANELLING installation, care & maintenance



PVC WALL PANELLING INSTALLATION & CARE & MAINTENANCE

INSTALLER & OWNER RESPONSIBILITIES:

The performance of your PVC panel product is closely linked to the quality of the installation of it and good care & maintenance being carried out on it following installation. It is the installer's responsibility to ensure that the installation is carried out as per the following installation instructions in all respects. No claims for product failure will be accepted if the product is incorrectly installed and/or installation errors made.

PRODUCT SUITABILITY & CHARACTERISTICS:

Cellular PVC wall panels are intended for use as an internal wall or ceiling overlay lining product only. If in doubt as to the suitability of the product consult an appropriate professional to confirm its suitability for your intended use of it.

PVC panels may have normal manufacturing characteristics visible such as telegraphing see through of the cellular section upstands and minor surface imperfections in the lacquer coating. These are an aspect of the manufacturing process for the product and are not grounds for complaint and are elements not covered by the product warranty.

1. PRE-INSTALLATION PROCEDURES

All of your PVC panels must be individually checked for any quality issues prior to installation of the panels.

- Please check carefully that the panels are from the same batch prior to installation and that the panels are an acceptable colour match. A batch number can be found on the back of each panel, as well as the outer packaging. Colour variation can occur between different batches; therefore all panels must be checked for colour uniformity before fitting. No claims for colour variance between panels will be accepted following installation of the panels.
- If installing your PVC panels using panel adhesive, ensure all surfaces to which the adhesive will be applied are sound, clean, dust free, dry, plumb and even. Any paints, sealers or coatings of any kind on the intended installation surface must be checked for soundness and adhesion suitability.

If there are any concerns regarding the PVC panels in any respect at the product checking and pre-installation stage do not install the panels and contact your PVC panel supplier and advise of, and clarify, your concerns. The associated product manufacturing defect warranty will be void, and no product fault claims will be accepted, for any form of defect complained of that was visible at the point of installation.

Recommended tools, equipment & installation accessories:

- Fine tooth saw &/or Utility knife
- Straight Edge
- Silicone Sealant
- Nails/Staples & Staple Gun
- Tape Measure
- Appropriate panel adhesive
- PVC Antibacterial Cleaner
- Gloves
- Eye protection glasses
- Ear defenders when cutting

2. INSTALLATION OF PANELS AND PROFILES

- PVC Panels may be nailed, stapled or screwed through the panel edge groove base flap into plumb and level wooden battens, or bonded direct to flat, plumb, sound and smooth walls or ceilings. If the installation sub surface is uneven install an appropriate timber batten frame system to the wall or ceiling to ensure a level batten frame to apply the panels to.
- Installation of your PVC panels should commence by attaching a scotia trim or end U cap as required to the wall, and or, ceiling edge joint.
- Mechanically fix or adhere the end cap/starting profile to the wall. Apply a full length unbroken bead of silicone sealant into the channel of the starting profile.
- If gluing panels to the wall, ceiling or framework, apply multiple full length beads of panel adhesive to the back of the panel and angle it into the starting profile. Alternatively if a wooden frame sub system is installed and nailing installation is to be used, locate the panel in position and staple or pin through the groove base flap into the wooden framing. Apply a small silicone bead along the upper tongue face of the next panel. Locate the next panel tongue into the groove of the previously installed panel and fix in the same manner as the first panel. Remove any excess silicone once the profiles are located.
- Continue across the sub surface or frame, using the same techniques per panel or H type trim mid-joints can be used if required. In some cases it may be necessary to cut off the tongues or grooves before fitting into any profiles used.
- Use an internal or external corner trim at wall corners or returns.
- Finish the installation of the panels by measuring and cutting the last panel to size. Finish and seal the final edge using silicone sealant, and either an end U cap or scotia trim to the panel edge as required, prior to fixing to the final panel and end trim as one unit to the sub surface.
- Ensure all panel ends and edges around sinks, baths, shower trays, shower units and any pipes or cut outs are fully sealed using silicone sealant. The PVC panel warranty will be void and no product fault claims will be accepted, where a problem occurs due to incorrect or inappropriate sealing of joints or seal failure as a result an inappropriate sealant being used.
- When fixing any accessories or heavy items to the panel surface ensure that the screws used to fix the item locate securely into the wall or battens as PVC panels are a thin cellular product and therefore the PVC material itself has limited holding capacity.

3. CUTTING & HANDLING PANELS

- PVC Panels should be carefully cut using a fine-tooth blade hand-saw, decorative face up.

Common sense safety precautions should be undertaken when handling the panels to avoid accidents. Gloves and eye protection should be worn when cutting the panels to minimize the risk of injury and ear defenders used.

4. LIGHTS & DOWN LIGHTING

PVC panels and profiles should not be subjected to temperatures from any source in excess of 60°C. If the panels are subjected to temperatures in excess of 60°C then damage may occur to its surface and as such will invalidate your warranty. Check with a suitably qualified electrician if any doubts exist as to the suitability, in terms of type and heat output, of any lighting units used on, or installed into, your PVC paneling.

5. AFTERCARE AND MAINTENANCE

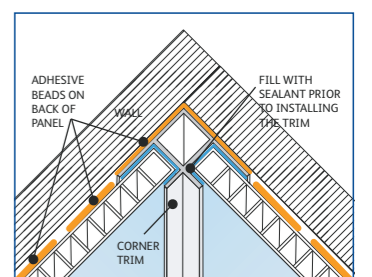
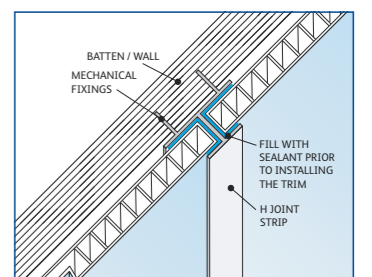
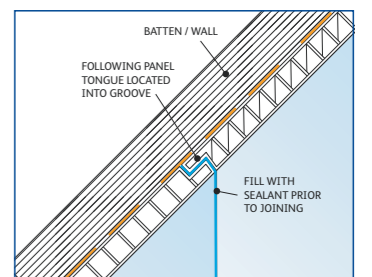
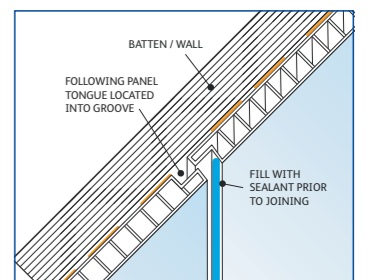
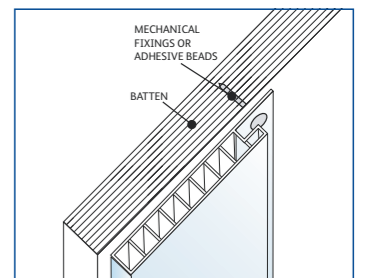
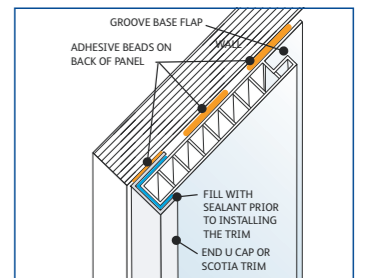
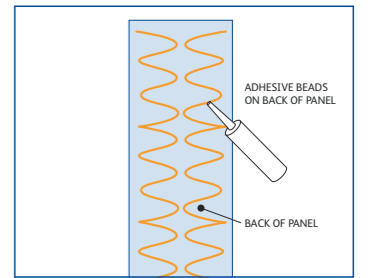
Once installed, your PVC Panels require only occasional ongoing maintenance and should be cleaned using a PVC Antibacterial Cleaner.

Do not use any abrasive scourers, abrasive agents or bleaches of any kind to clean this product.

PVC panels have an element of resistance to both artificial and natural Ultra Violet light however the panels are not ultimately Ultra Violet light stable and therefore fading of panels may occur over time where the panels are subject to direct sunlight. To avoid and minimize this effect occurring it is recommended that curtains or blinds are used during periods of prolonged or intense sunlight.

6. WARRANTY

Your PVC paneling carries a **two year** domestic use limited manufacturing defect warranty. Please retain your product receipt as proof of purchase as this will be required should a product fault claim be made. A copy of the warranty is available via your PVC paneling Supplier.



Disclaimer - We reserve the right to amend the details contained within this document without prior notice. E&OE. PVC panels can have minor manufacturing characteristics present such as telegraphing of the cellular structure and minor surface particle or imperfections. These are normal visual elements for this type of product and if present are not grounds for complaint and are not aspects covered by the product warranty.